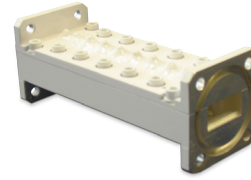


REJECT FILTERS

MitecVSAT's lines of Reject Filters have been specifically designed for VSAT applications. Transmit Reject filters are used in the receivers and reject any spurious signals at the transmit frequency. Receive Reject filters are used in the transmitters and reject any spurious frequencies at the receive frequency. Interference filters will eliminate strong out of band interference caused by various radars (Military, Coastal, Marine) and Airport communications.

KEY FEATURES

- Available in C and Ku Bands
- ROHS Compliant Design
- Rated for Outdoor Use
- Efficient and Compact Design



SPECIFICATIONS

C BAND TRANSMIT REJECT

KU BAND TRANSMIT REJECT

Model Number	M1052-07	12985-002MD
Frequency Range	3.6 – 4.2 GHz	10.7 – 12.75 GHz
Maximum VSWR	1.25 : 1	1.20 : 1
Maximum Insertion Loss	0.05 dB	0.15 dB
Rejection	60 dB	60 dB
Rejection Frequency Range	5.85 – 6.725 GHz	13.75 – 14.50 GHz
Flange Types	WR229 CPRG, CPRF	WR75 Cover Flat, Cover Grooved
Length	6.35 in	3.9 in

SPECIFICATIONS

C BAND RECEIVE REJECT

KU BAND RECEIVE REJECT

Model Number	M4140-03	M3761-04
Frequency Range	5.85 – 7.10 GHz	13.75 – 14.50 GHz
Maximum VSWR	1.15 : 1	1.15 : 1
Maximum Insertion Loss	0.10 dB	0.20 dB
Rejection	70 dB	70 dB
Rejection Frequency Range	3.40 - 4.70 GHz	Below 12.75 GHz
Flange Types	WR137 CPRG, CPRF	WR75 Cover Flat, Cover Grooved
Length	7.62 in	4.45 in

SPECIFICATIONS

C BAND RECEIVE INTERFERENCE

Model Number	216078-001AD
Frequency Range	3.70 – 4.20 GHz
Typical VSWR	1.15 : 1
Maximum Insertion Loss	0.50 dB at Center, 0.75 dB at Edges
Rejection	20 dB @ 3.65 / 4.25 GHz
Rejection	70 dB @ 3.50 / 4.40 GHz
Transmit Rejection	70 dB @ 5.85 – 6.65 GHz
Group Delay	8 ns
Flange Types	WR229 CPRG, CPRF
Length	5.75 in

FASTENING HARDWARE KITS

MitecVSAT can also supply you with individually packaged fastening hardware kits to ease in the assembly of your communication link.

SPECIFICATIONS

C BAND

C BAND

KU BAND

Model Number	2520590-5	2520590-2	1516859
Socket Head Cap Screw (S.S.)	10-32 x 0.75 (8)	1/4 -20 x 1.00 (10)	6-32 x 0.75 (4)
Hex Nut (S.S.)	10-32 (8)	1/4 -20 (10)	6-32 (4)
Flat Washer (S.S.)	#10 (8)	#1/4 (10)	#6 (4)
Gasket (Silicone)	CPR137 Half	CPR229 Half	WR75 O Ring

YOUR DAILY EXPERIENCE POWERED BY MITECVSAT

SALES@MITECVSAT.COM | WWW.MITECVSAT.COM | 1-514-694-8666

Rev. 0 05/12

**mitec** **VSAT**
a division of Alga Microwave Inc.

VSAT WAVEGUIDE ACCESSORIES



SATELLITE COMMUNICATIONS

VSAT WAVEGUIDE ACCESSORIES

MitecVSAT, a global provider of RF components and systems to telecom and satcom markets, is cranking up the power.

Choose the waveguide accessories for the integration of your VSAT system, and you will receive a value priced solution, when you need it, where you need it, with everything you need. The fact is MitecVSAT has been building and supporting carrier-grade solutions since 1973. Fast delivery, full documentation, immediate product support, engineered solutions – that is MitecVSAT.

YOUR DAILY EXPERIENCE POWERED BY MITEC**VSAT**

SALES@MITECVSAT.COM | WWW.MITECVSAT.COM | 1-514-694-8666

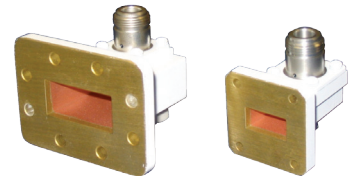
**mitec** **VSAT**
a division of Alga Microwave Inc.

WAVEGUIDE TO COAXIAL TRANSITIONS

MitecVSAT's Waveguide to Coaxial Transitions are a means of adapting from Coaxial to Waveguide Transmission Line or vice versa. Models operate over the transmit frequency range and offer very good VSWR performance.

KEY FEATURES

- Available in C and Ku Bands
- ROHS Compliant Design
- Rated for Outdoor Use



SPECIFICATIONS

C BAND

KU BAND

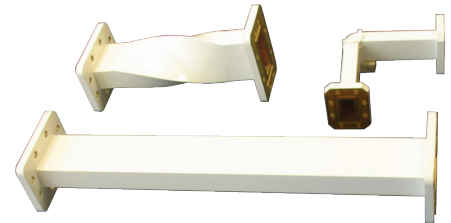
Model Number	M0926W-05-02	M0926W-08-06
Frequency Range	5.85 – 7.1 GHz	13.75 – 14.50 GHz
Maximum VSWR	1.15 : 1	1.15 : 1
Connector Type	Type N Female	Type N Female
Total Length	2.00 in	1.63 in.

WAVEGUIDE

MitecVSAT manufactures a wide range of straight and bent rectangular waveguide sections to complete your transmission line. MitecVSAT rectangular waveguide are made from Copper to minimize path loss.

KEY FEATURES

- Available in C and Ku Bands
- ROHS Compliant Design
- Rated for Outdoor Use
- In-House Manufacturing ensures fast delivery



SPECIFICATIONS

C BAND STRAIGHT SECTION

KU BAND STRAIGHT SECTION

Model Number**	M1240W-05-XX-01-02	M1240W-08-XX-06-18
Frequency Range	5.85 – 7.1 GHz	10.7 – 14.50 GHz
Insertion Loss	0.02 dB per foot	0.06 dB per foot
Flange Types	CPRG, CPRF	Cover Flat, Cover Grooved
Available Lengths	6 in., 12 in., 24 in., 36 in	6 in., 12 in., 24 in., 36 in

SPECIFICATIONS

C BAND BEND SECTION

KU BAND BEND SECTION

Model Number*	M1699W-05-X90-3-3-01-02	M1699W-08-X90-2-2-06-18
Frequency Range	5.85 – 7.1 GHz	13.75 - 14.50 GHz
Insertion Loss	0.08 dB	0.10 dB per foot
Flange Types	CPRG, CPRF	Cover Flat, Cover Grooved
Leg Lengths	3 in. x 3 in.	2 in. x 2 in.

SPECIFICATIONS

C BAND TWIST SECTION

KU BAND TWIST SECTION

Model Number	M1246W-05-6-01-02	M1246W-05-6-06-18
Frequency Range	5.85 – 7.1 GHz	13.75 - 14.50 GHz
Insertion Loss	0.015 dB	0.35 dB
Flange Types	CPRG, CPRF	Cover Flat, Cover Grooved
Lengths	6 in.	6 in.

* Replace X with Desired Bend Type (E or H)

** Replace XX with Desired Length

FLEXIBLE WAVEGUIDE

MitecVSAT's Flexible Waveguide products have more than a quarter century of proven field experience, demonstrating their unmatched dependability and reliability day after day. Uniquely designed to be a high quality but cost effective solution for the VSAT market, this line of flexible waveguides sets the standard for the industry

KEY FEATURES

- Available in C and Ku Bands
- ROHS Compliant Design
- Rated for Outdoor Use
- In-House Manufacturing ensures fast delivery



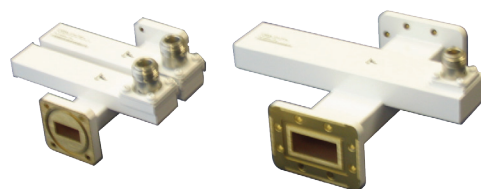
SPECIFICATIONS	C BAND	KU BAND
Model Number:		
- For 36-inch length	M1640-05-36-N-01-02-U	M1640-08-36-N-06-18-U
- For 48-inch length	M1640-05-48-N-01-02-U	M1640-08-48-N-06-18-U
Frequency Range	5.85 – 7.1 GHz	13.75 – 14.50 GHz
Maximum VSWR	1.10 : 1	1.13 : 1
Insertion Loss	0.06 dB per foot	0.13 dB per foot
Power Handling	2.0 kilowatts	750 watts
Flange Types	CPRG, CPRF	Cover Flat. Cover Grooved
Other Available Lengths	12 in., 24 in., 72 in.	12 in., 24 in., 72 in.

CROSS GUIDE COUPLERS

MitecVSAT's Cross Guide Couplers with their compact size, moderate directivity and flat coupling over a wide frequency range are ideal for such applications as power monitoring, signal injection and telemetry.

KEY FEATURES

- Available in C and Ku Bands
- ROHS Compliant Design
- Rated for Outdoor Use
- Available in Single or Dual Arm Design



SPECIFICATIONS	C BAND	C BAND	KU BAND
Model Number Single Arm***	M0907W-02-XXY-01-02	M0907W-05-XXY-01-02	M0907W-08-XXY-06-18
Model Number Dual Arm***	M1671W-02-XXY-XXY-01-02	M1671W-05-XXY-XXY-01-02	M1671W-08-XXY-XXY-06-18
Frequency Range	3.7 – 4.2 GHz	5.85 – 7.1 GHz	10.7 – 12.75 GHz or 13.75 – 14.50 GHz
Maximum VSWR in Main Arm	1.10 : 1	1.10 : 1	1.10 : 1
Maximum VSWR in Coupled Arm	1.22 : 1	1.22 : 1	1.22 : 1
Minimum Directivity	20 dB	20 dB	20 dB
Flange Types	CPRG, CPRF	CPRG, CPRF	Cover Flat, Cover Grooved
Available Coupling Ratios	25 dB, 35dB, 45 dB, 50 dB	25 dB, 35dB, 45 dB, 50 dB	25 dB, 35dB, 45 dB, 50 dB
Length Single Arm	7.0 in	6.0 in	3.75 in
Length Double Arm	7.5 in	5.25 in	4.0 in

*** Replace XXY with Desired Coupling Ratio and Coupling Direction

Example of MitecVSAT Part number for a C-Band Single Arm 50 dB Coupler - M0907W-02-50F-01-02